

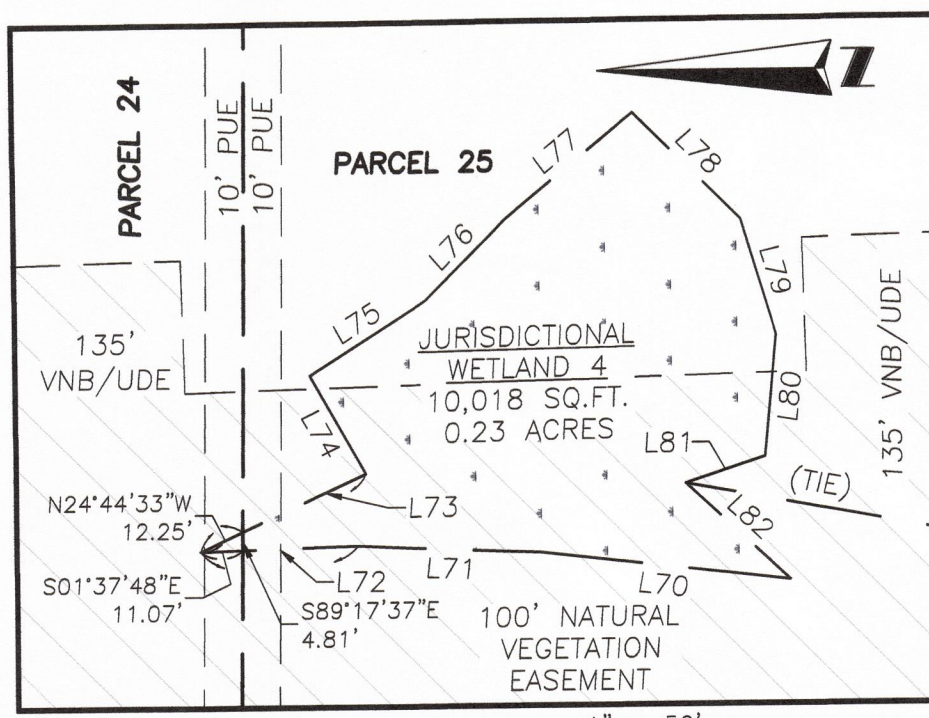
Southern Estates Phase II

BEING A PORTION OF SECTION 13, TOWNSHIP 03 SOUTH, RANGE 21 EAST
OF THE PUBLIC RECORDS OF BAKER COUNTY, FLORIDA

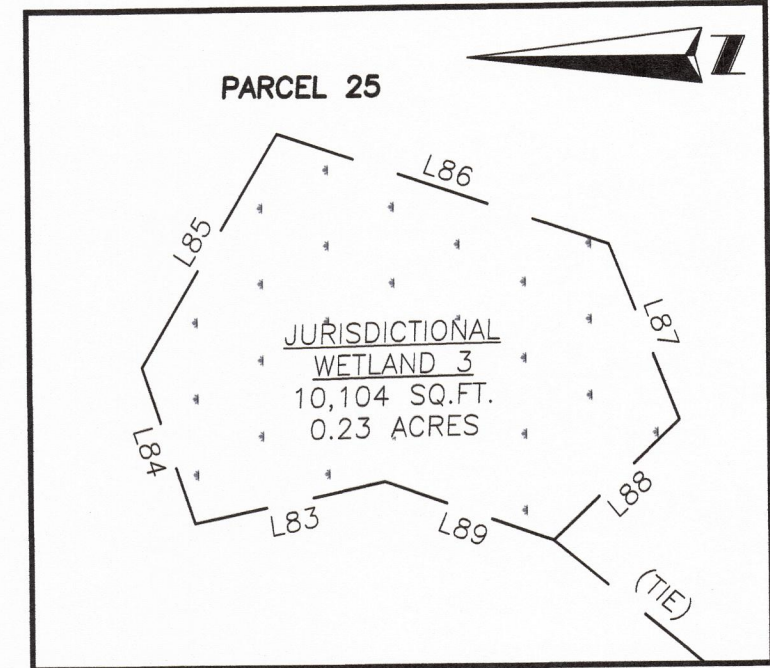
PLAT BOOK

PAGE

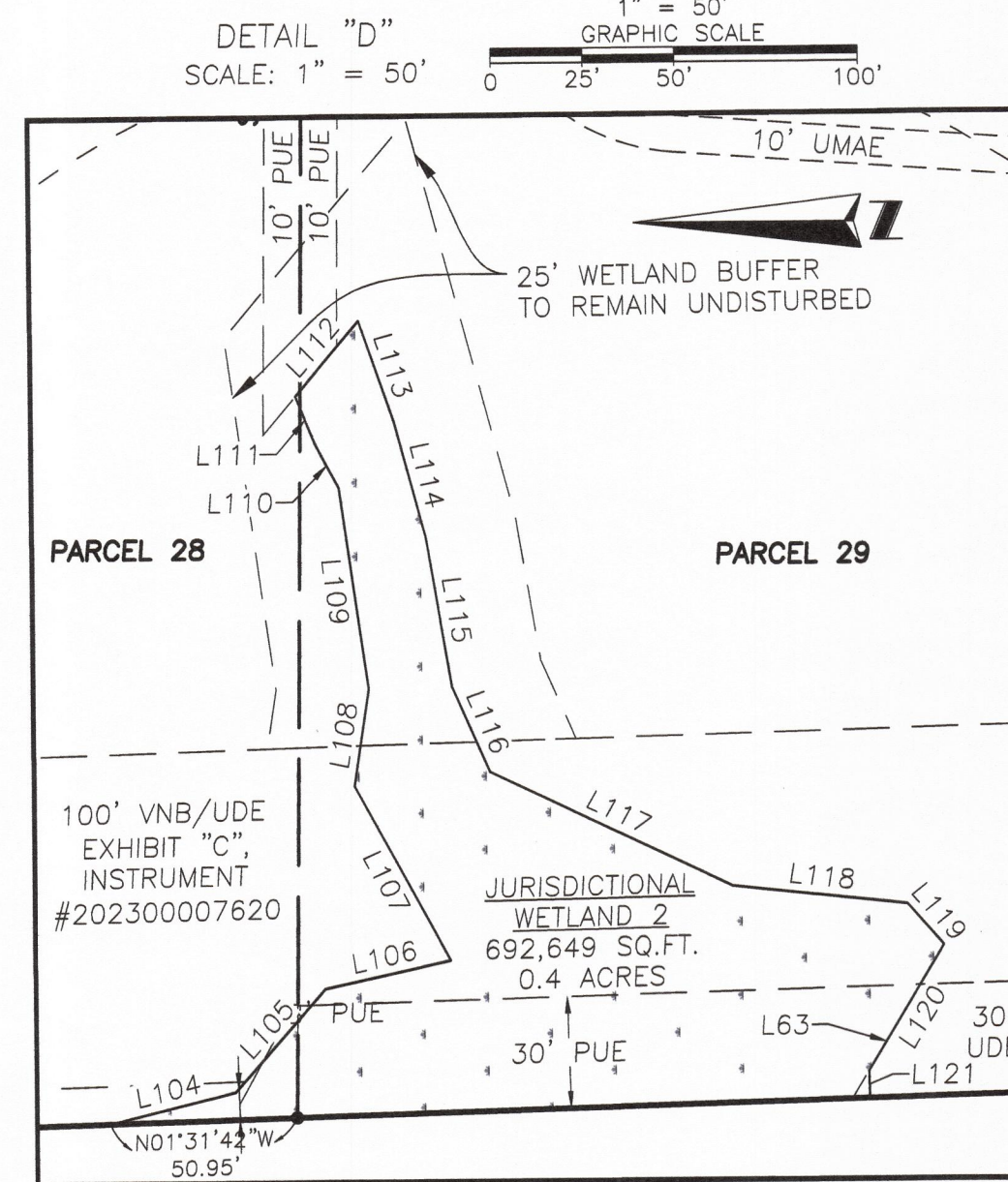
THIS MAP IS NOT COMPLETE WITHOUT SHEETS 1 THROUGH 4 SHEET 4 OF 4



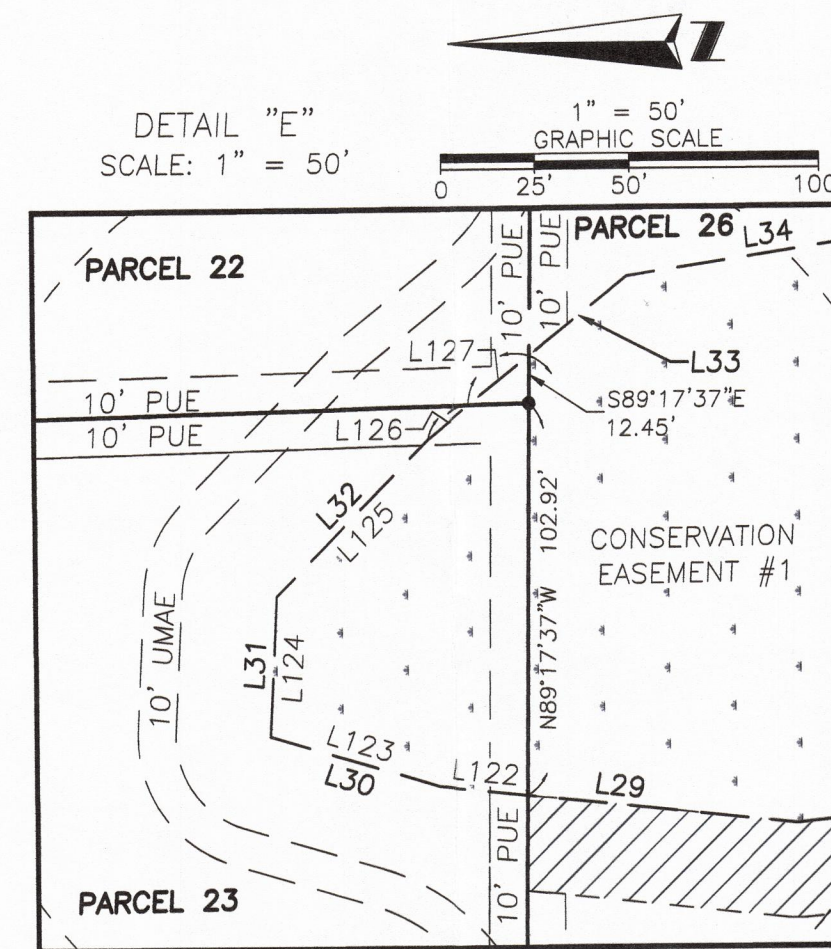
DETAIL "A"
SCALE: 1" = 50'



DETAIL "B"
SCALE: 1" = 50'



DETAIL "D"
SCALE: 1" = 50'



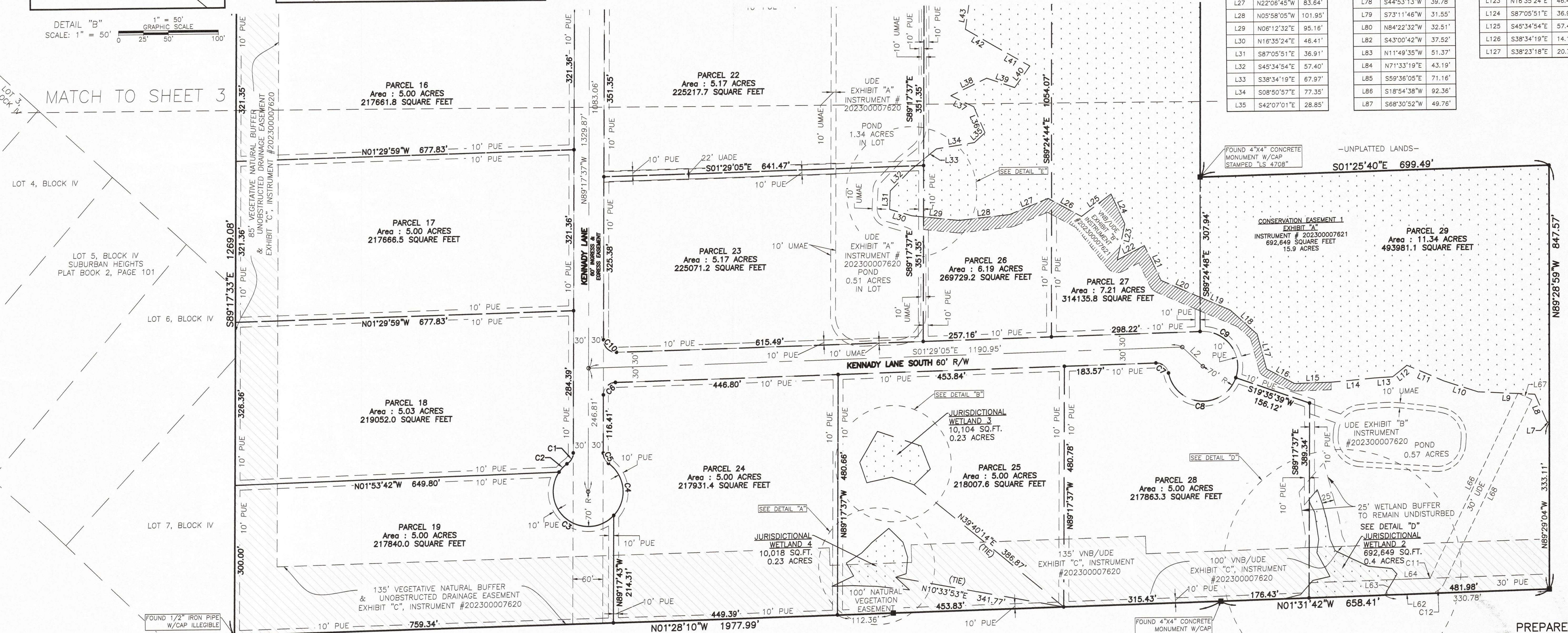
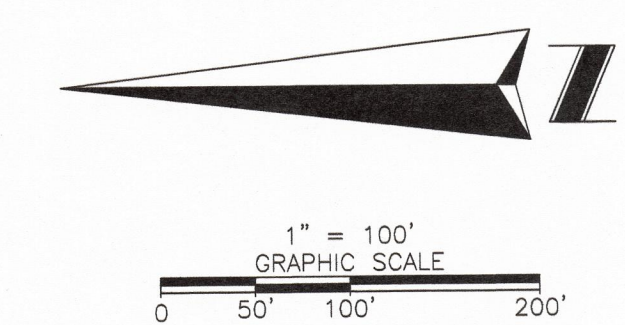
DETAIL "E"
SCALE: 1" = 50'

CURVE TABLE					
CURVE #	RADIUS	DELTA	LENGTH	CHORD BEARING	CHORD DISTANCE
C1	25.61'	58°47'20"	26.27'	N59°31'32"W	25.14'
C2	70.00'	18°53'44"	23.09'	N46°05'53"W	22.98'
C3	70.00'	171°03'10"	208.98'	S38°55'40"W	139.57'
C4	70.00'	97°19'06"	118.90'	N84°44'32"E	105.11'
C5	25.00'	54°37'24"	23.83'	N63°23'41"E	22.94'
C6	25.00'	87°48'32"	38.31'	S45°23'21"E	34.67'
C7	25.00'	80°54'55"	35.31'	S38°58'23"W	32.44'
C8	70.00'	149°50'11"	183.06'	S4°30'45"W	135.18'
C9	70.00'	113°33'04"	138.73'	N52°52'25"E	117.11'
C10	25.00'	92°11'28"	40.23'	N44°36'39"E	36.02'
C11	5.00'	62°26'02"	5.45'	S32°42'09"E	5.18'
C12	35.72'	60°14'02"	37.55'	N33°28'57"W	35.84'

LINE TABLE		
LINE #	BEARING	LENGTH
L2	S43°30'55"W	56.57'
L7	N18°42'10"E	5.07'
L8	N66°42'49"E	60.01'
L9	N02°55'03"E	113.82'
L10	N18°14'44"E	72.15'
L11	N23°26'23"E	80.35'
L12	N38°19'38"W	36.78'
L13	N03°02'14"W	36.35'
L14	N04°58'15"W	87.36'
L15	N01°33'28"W	73.06'
L16	N28°04'38"E	63.40'
L17	N75°28'07"E	72.10'
L18	N42°35'13"E	72.19'
L19	N23°25'15"E	66.25'
L20	N23°47'37"E	84.63'
L21	N64°31'50"E	76.86'
L22	N27°10'39"W	61.12'
L23	S77°29'18"E	73.02'
L24	N65°46'59"E	66.37'
L25	N36°46'12"W	74.19'
L26	N28°57'14"E	76.05'
L27	N22°06'45"W	83.64'
L28	N05°58'05"W	101.95'
L29	N06°12'32"E	95.16'
L30	N16°35'24"E	46.41'
L31	S87°05'51"E	36.91'
L32	S45°34'54"E	57.40'
L33	S38°34'19"E	67.97'
L34	S08°50'57"E	77.35'
L35	S42°07'01"E	28.85'

LINE TABLE		
LINE #	BEARING	LENGTH
L36	N66°54'37"E	56.52'
L37	N26°10'18"E	50.66'
L38	S25°23'37"E	79.66'
L39	S18°59'39"W	59.25'
L40	S54°15'18"E	52.59'
L41	N29°47'41"E	79.12'
L42	N30°42'14"E	69.66'
L43	S81°16'20"E	52.44'
L44	N01°31'42"W	89.79'
L45	S58°44'43"E	35.97'
L46	S01°29'08"E	69.71'
L47	S63°55'10"E	407.29'
L48	N63°55'10"W	407.29'
L49	N06°42'14"E	66.22'
L50	N23°25'15"E	66.25'
L51	N02°36'10"E	48.20'
L52	N01°37'48"W	41.59'
L53	S24°44'33"E	48.21'
L54	N60°42'38"E	29.77'
L55	S32°33'30"E	36.10'
L56	S44°30'33"E	30.29'
L57	S39°17'04"E	43.51'
L58	S44°53'13"W	39.78'
L59	S73°11'46"W	31.55'
L60	N84°22'32"W	32.51'
L61	S43°00'42"W	37.52'
L62	N11°49'35"W	51.37'
L63	N71°33'19"E	43.19'
L64	S59°36'05"E	71.16'
L65	S18°54'38"W	92.36'
L66	S68°30'52"W	49.76'

LINE TABLE		
LINE #	BEARING	LENGTH
L67	N43°16'26"W	45.76'
L68	N19°35'32"E	47.08'
L69	S13°41'44"E	35.22'
L70	S48°25'18"E	37.21'
L71	S12°26'32"E	35.01'
L72	N61°30'51"E	54.00'
L73	S81°24'59"E	26.74'
L74	N82°04'04"E	55.20'
L75	N61°54'12"E	13.67'
L76	N67°36'40"E	13.81'
L77	S49°34'40"E	26.75'
L78	S70°59'09"W	29.03'
L79	S75°01'29"W	32.71'
L80	S80°27'32"W	40.98'
L81	S66°19'22"W	25.33'
L82	S25°31'56"W	72.89'
L83	S06°13'49"W	47.74'
L84	S48°29'20"W	14.92'
L85	N58°44'43"W	39.97'
L86	S88°30'51"W	7.36'
L87	S45°34'54"E	57.40'
L88	S38°34'19"E	14.17'
L89	S38°30'18"E	20.72'



SEE SHEET 1 & 2 FOR LEGEND, GENERAL NOTES & CERTIFICATIONS

REVISIONS		SURVEY DATE: 12/04/2023	
DATE:	DATE:	WORK ORDER: W110129.000	
REVISION DESCRIPTION:	REVISION DESCRIPTION:	CAD FILE: "66552004"	
REVISED BY:	REVISED BY:	DRAFTED BY: PGP/CJ/JLVM	
		CHECKED BY: TFF	

SOUTHEASTERN SURVEYING AND MAPPING CORPORATION
8641 Baypine Road, Suite 5
Jacksonville, Florida 32256
(904) 737-5990 Fax (904) 737-5995
e-mail: info@southeasternsurveying.com
Certification Number LB2108

PREPARED BY:

Z:\PROJECTS\2021\1111 SOUTHERN ESTATES\PHASE 2\10-08-2021 (110129) SOUTHERN ESTATES-PH2 WETLANDS\PROJECT DATA\PLAT PHASE 2\06166552004r.dwg